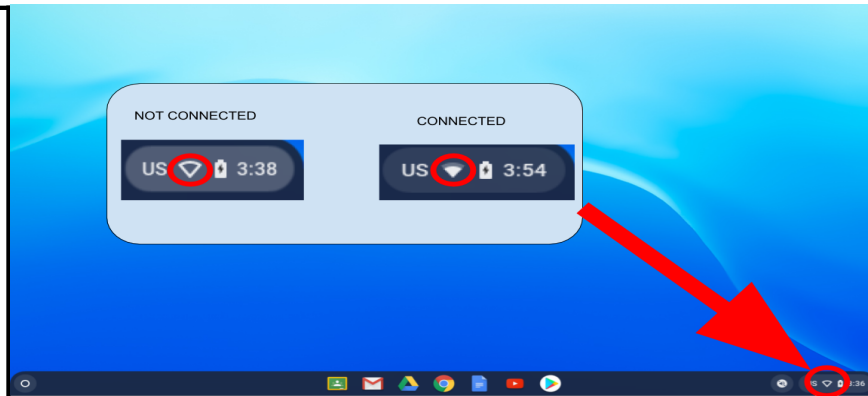


Connect to WiFi

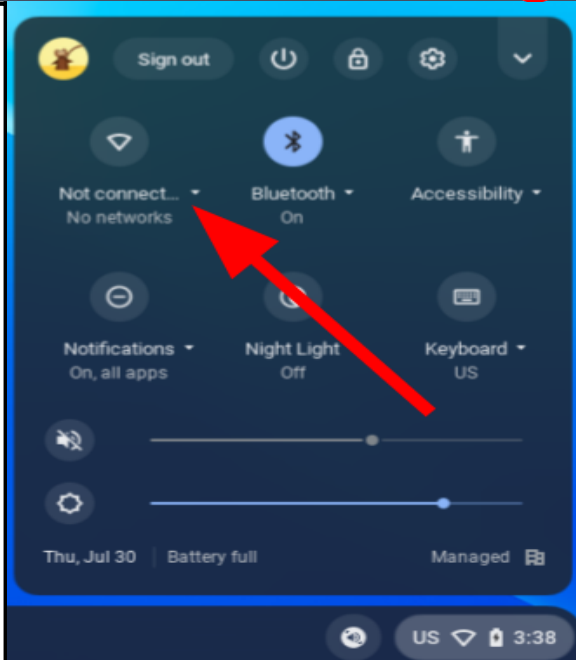
1. Make sure the WiFi on the chromebook is turned ON

- If NOT connected to WiFi, the small baseball diamond shape will be empty
- If connected to WiFi, the small baseball diamond shape will be white
- To connect to WiFi, click the baseball diamond



2. If your chromebook has not been connected to WiFi yet, it will say "not connected." If your WiFi is not on, it will also say "no networks available"

- Click where it says "not connected" to pull up your WiFi settings/networks



3. If WiFi is turned off, the slide button circle will be on the left and will be white as shown in the first picture to the right. Click the slide button to turn WiFi on.

- When WiFi is on the slide button circle will be on the right and will be blue.

- All available WiFi networks will be below, click the network you want to connect to. (You may need your WiFi password at home to connect to home WiFi)
At school, students should always be connected to MOBILE-STUDENT

